

CONNEX

MODULAR BENCH DESKING

Connex bench desking is based on one principle – simplicity. With its clean lines and elegant form, Connex offers a choice of classic tried and tested configurations from a single desk to hundreds of workstations in a wide variety of sizes to fit any office space. The legs can be shared between bench clusters, which not only look aesthetically pleasing, but save space and decreases costs.



PRODUCT SPECS

BS EN527-2:2016



Product
guarantee



Designed &
manufactured

DESK SHAPES



Straight

FEATURES

Bench desk system with shared, recessed legs for runs of desks

Square steel framework with mitred frame for enhanced strength & stability

Desktops with cable access ports to feed plugs and cables through

Quick assembly modular bench desk system for high density office spaces



ES1600

Fabric desktop screens with brackets

SWY300K2-G

Sway performance mesh back operator chair

COUEDCR

Cable riser to ensure complete cable control

R2M

Mobile 2 drawer pedestal

CO4816

Triple back-to-back bench desks

FRAMES

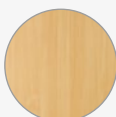


Silver
(S)

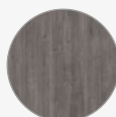


White
(WH)

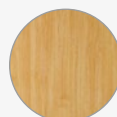
WOOD FINISHES



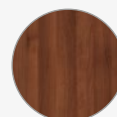
Beech
(B)



Grey Oak
(GO)



Oak
(O)



Walnut
(W)



White
(WH)

Single Desks



CODE	W	D	H	RRP
CO128	1200	800	725	£410
CO148	1400	800	725	£431
CO168	1600	800	725	£461



- Single straight desks 800mm deep with two cable access ports
- Rectangular steel framework in silver or white with excellent strength & stability

Single Add-on Units



CODE	W	D	H	RRP
CO128-AB	1200	800	725	£291
CO148-AB	1400	800	725	£314
CO168-AB	1600	800	725	£370



- Single desk add-on units 800mm deep, supplied with a recessed centre leg
- Recessed leg is positioned in the centre of the bench desks



Silver (S)



White (WH)



Beech (B)



Grey Oak (GO)



Oak (O)



Walnut (W)



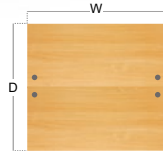
White (WH)

Please add frame finish followed by desktop finish when ordering eg. **CO168** with Silver frame in Beech = **CO168-S-B**

Back-to-Back Desks



CODE	W	D	H	RRP
CO1216	1200	1600	725	£717
CO1416	1400	1600	725	£762
CO1616	1600	1600	725	£814



- Two straight 800mm deep desks back-to-back, both with two cable access ports
- Extended rectangular steel framework for added strength & stability

Back-to-Back Add-on Units



CODE	W	D	H	RRP
CO1216-AB	1200	1600	725	£472
CO1416-AB	1400	1600	725	£528
CO1616-AB	1600	1600	725	£570

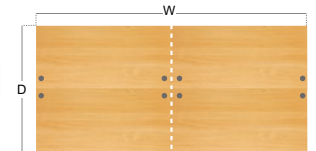


- Two straight 800mm deep add-on units back-to-back, supplied with a centre leg
- Recessed leg is positioned in the centre of the bench desks and can be extended

Double Back-to-Back Desks

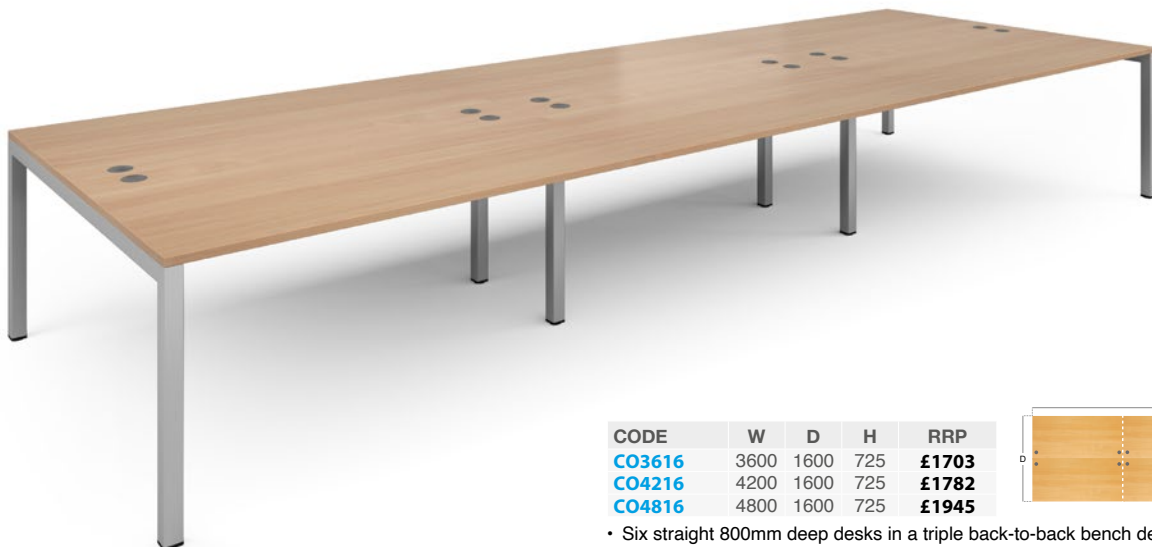


CODE	W	D	H	RRP
CO2416	2400	1600	725	£1188
CO2816	2800	1600	725	£1284
CO3216	3200	1600	725	£1378



- Four straight 800mm deep desks in a double back-to-back bench desk configuration
- Legs are shared between desk, recessed centre leg support to save space and costs

Triple Back-to-Back Desks



CODE	W	D	H	RRP
CO3616	3600	1600	725	£1703
CO4216	4200	1600	725	£1782
CO4816	4800	1600	725	£1945



- Six straight 800mm deep desks in a triple back-to-back bench desk configuration
- Legs are shared between desk clusters with recessed centre leg supports



Silver (S)



White (WH)



Beech (B)



Grey Oak (GO)



Oak (O)



Walnut (W)



White (WH)

Please add frame finish followed by desktop finish when ordering eg. **CO1616** with Silver frame in Beech = **CO1616-S-B**

Start simple then Connex add-on units!



Step 1

Select a starter unit which can be single desk or back-to-back desks. Choose your add-on unit in the same width and finish as the starter unit



Step 2

Remove one set of legs from the starter unit and add to the end of the add-on unit



Step 3

Connect the add-on unit to the starter unit. Simply repeat the process connect more add-on units to create runs of desks



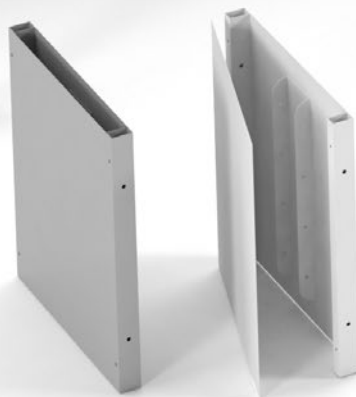
Beam

Steel legs and framework for enhanced strength and stability

Mass cable riser

Manages all the cables from the desk to the floor

CODE	W	D	H	RRP
COUEDCR	450	50	700	£165



Silver (S)



White (WH)

Please add finish when ordering eg. **COUEDCR** in Silver = **COUEDR-S**

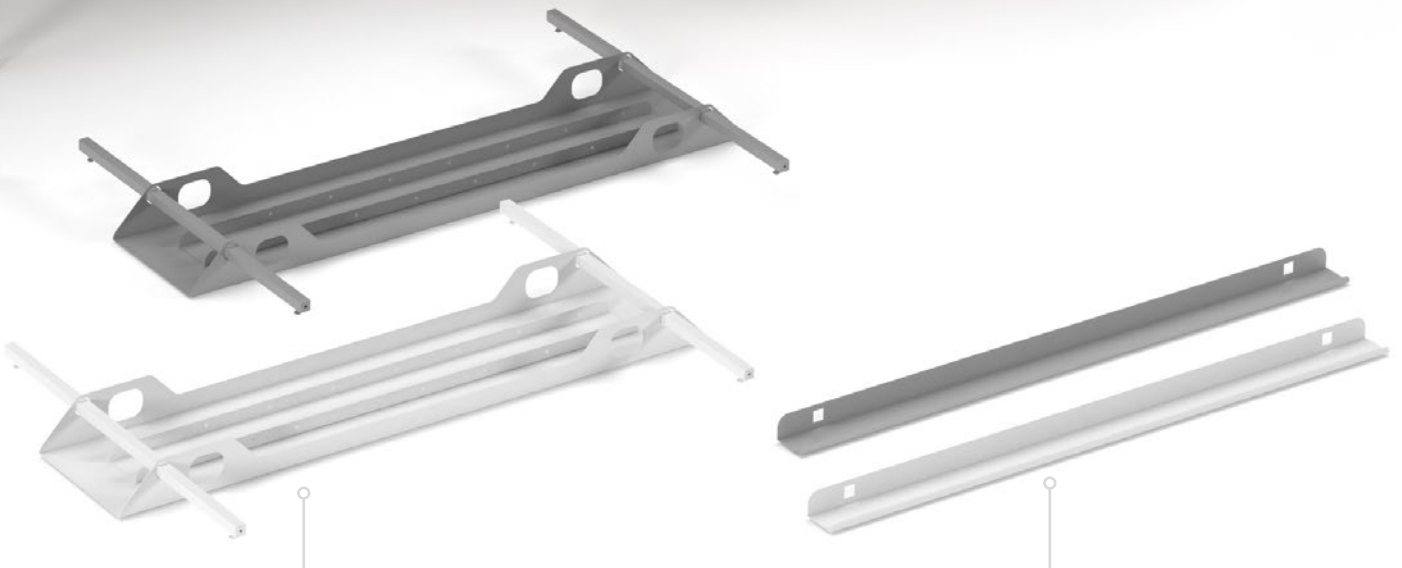
Offering choice is essential when creating a space for an agile workforce, and Connex's clever design and versatile components help you to do more with less.

Through its twin fixed beam steel frame construction, Connex is robust enough to cope with the rigours of a busy office and is an ideal modular system for high density office spaces.



Cable trays

Central drop down cable trays for easy cable management on back-to-back desks



Double cable trays

Double trays to fit back-to-back desks

CODE	USAGE	W	D	H	RRP
COU12DCT	Fits 1200 wide desk	1000	300	100	£116
COU14DCT	Fits 1400 wide desk	1200	300	100	£126
COU16DCT	Fits 1600 wide desk	1400	300	100	£141

Single cable trays

Single trays to fit single desks

CODE	USAGE	W	D	H	RRP
COU12SCT	Fits 1200 wide desk	1000	75	50	£74
COU14SCT	Fits 1400 wide desk	1200	75	50	£84
COU16SCT	Fits 1600 wide desk	1400	75	50	£94



Silver (S)



White (WH)

Please add finish when ordering eg. **COU16DCT** in Silver = **COU16DCT-S**