



LEE & PLUMPTON

*Inspiration At Work*

# BENCH DESKING





# AURABENCH

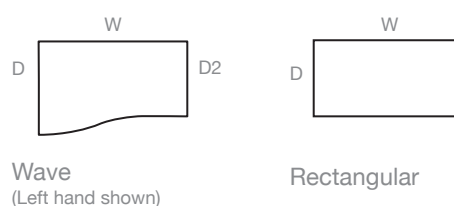




## Features & Details

- High end solution where style matches practicality.
- Aesthetic design with smooth curved leg frame feature.
- Flexibility – 2, 4, 6 or 8 person bench plus retrofit options.
- Ideal solution for multi-monitor screen requirements.
- Quality, robust manufacturing including continuous heavy gauge steel tube for leg frame.
- Integrated, easy access cable management with flat cable tray option for large devices, e.g. transformer plugs.
- 25mm worksurfaces.

### DESK SHAPES



Wave  
(Left hand shown)

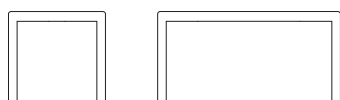
Rectangular

### SPECIFICATION

- Floating desktop design made from 25mm grade E1 melamine faced high density particle board.
- The intermediate leg adds extra strength and support.
- Height levelling feet as standard.
- A scallop design is featured at the rear of each desk.
- Standalone desk plus 2, 4, 6 and 8 person bench.
- 'Plus 2' bench available as retrofit.
- Desk return and 'standalone' meeting table available as additional options.
- Strong, sturdy construction for screens and accessories.

### FRAME

- Stylish laser cut profile end frame made from a continuous heavy gauge steel tube for extra strength.



### CABLE MANAGEMENT

- Bench systems supplied with integrated cable management to span the full width of the configuration.
- Scalloped edge at back of worksurface allows cables to exit along the worktop – ideal for multi-cable requirements.
- Cable management tray is angled to provide easy access through the large portholes to cables and power units.
- Vertical cable tower available for fully integrated, floor box to desk top cable management.
- Additional cable management and accessories are available.

### PEDESTAL SPECIFICATION

- 25mm top and drawer fronts with an 18mm unit.
- Narrow pedestal available, 18mm complete unit.
- Silver bow handles.
- Steel options also available.



### QUICK SHIP

#### Not available

Wood finishes are heat, stain and scratch resistant when used for their intended purposes.

Please add the metal and wood suffix to your code when ordering eg: AUSW14RSBI

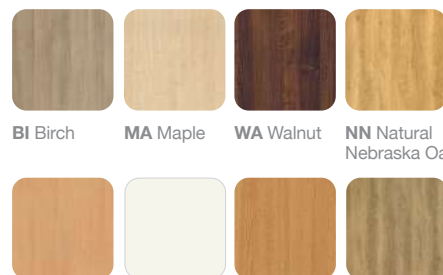
### GROUP A

#### Metal Finishes



S Silver W White B Matt Black

#### Wood Finishes



BI Birch MA Maple WA Walnut NN Natural Nebraska Oak  
BE Beech WH White LO Light Oak GN Grey Nebraska Oak

**QS:** Quick Ship | **GROUP A:** Subject to a longer lead time.

● Available  
○ Not Available

## SINGLE DESKS (AVAILABLE IN 600 & 800 DEEP)

### WAVE DESK



Cable management comes as standard for single desks.

W x D x D2 x H (mm)	Left Hand	Right Hand	QS	Grp A
<b>600 Deep</b>				
(1200) 1200 x 800 x 600 x 740	AUSW12L	AUSW12R	○	●
(1400) 1400 x 800 x 600 x 740	AUSW14L	AUSW14R	○	●
(1600) 1600 x 800 x 600 x 740	AUSW16L	AUSW16R	○	●
(1800) 1800 x 800 x 600 x 740	AUSW18L	AUSW18R	○	●
<b>800 Deep</b>				
(1200) 1200 x 1000 x 800 x 740	AUWV12L	AUWV12R	○	●
(1400) 1400 x 1000 x 800 x 740	AUWV14L	AUWV14R	○	●
(1600) 1600 x 1000 x 800 x 740	AUWV16L	AUWV16R	○	●
(1800) 1800 x 1000 x 800 x 740	AUWV18L	AUWV18R	○	●

If you need a desktop screen, single AuraBench desks require different fixings. Please contact our customer services team for enquiries.

### RECTANGULAR DESK



W x D x H (mm)	Code	QS	Grp A
<b>600 Deep</b>			
(1200) 1200 x 600 x 740	AURS12	○	●
(1400) 1400 x 600 x 740	AURS14	○	●
(1600) 1600 x 600 x 740	AURS16	○	●
(1800) 1800 x 600 x 740	AURS18	○	●
<b>800 Deep</b>			
(1200) 1200 x 800 x 740	AURE12	○	●
(1400) 1400 x 800 x 740	AURE14	○	●
(1600) 1600 x 800 x 740	AURE16	○	●
(1800) 1800 x 800 x 740	AURE18	○	●

If you need a desktop screen, single AuraBench desks require different fixings. Please contact our customer services team for enquiries.

### MODESTY PANEL



Width (mm)	Code	QS	Grp A
1200 (Width)	AUMO12	○	●
1400 (Width)	AUMO14	○	●
1600 (Width)	AUMO16	○	●
1800 (Width)	AUMO18	○	●

- Modesty panel fits to the single desk only.
- 304mm deep.
- 18mm board with 2mm edging.

**QS:** Quick Ship | **GROUP A:** Subject to a longer lead time.

- Available
- Not Available

## SET OF 2 DESKS (AVAILABLE IN 600 & 800 DEEP)

### WAVE DESK

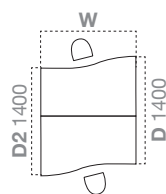


W x H (mm) (See D x D2 below)	Code	QS	Grp A
<b>600 Deep</b>			
(1200) 1200 x 740	AUSW12S2	○	●
(1400) 1400 x 740	AUSW14S2	○	●
(1600) 1600 x 740	AUSW16S2	○	●
(1800) 1800 x 740	AUSW18S2	○	●
<b>800 Deep</b>			
(1200) 1200 x 740	AUWW12S2	○	●
(1400) 1400 x 740	AUWW14S2	○	●
(1600) 1600 x 740	AUWW16S2	○	●
(1800) 1600 x 740	AUWW18S2	○	●

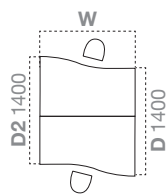
Please add your wave hand options to your code when ordering **A, B** or **C** eg: AUSW12S2**A**  
Please note add the wave hand code before the finish option codes.

### WAVE HAND OPTIONS

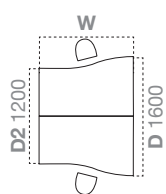
#### 600 Deep



Option A

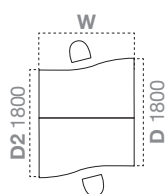


Option B

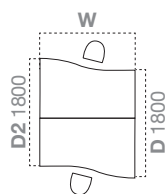


Option C

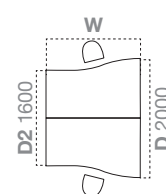
#### 800 Deep



Option A



Option B



Option C

### RECTANGULAR DESK



W x D x H (mm)	Code	QS	Grp A
<b>600 Deep</b>			
(1200) 1200 x 1200 x 740	AURS12S2	○	●
(1400) 1400 x 1200 x 740	AURS14S2	○	●
(1600) 1600 x 1200 x 740	AURS16S2	○	●
(1800) 1800 x 1200 x 740	AURS18S2	○	●
<b>800 Deep</b>			
(1200) 1200 x 1600 x 740	AURE12S2	○	●
(1400) 1400 x 1600 x 740	AURE14S2	○	●
(1600) 1600 x 1600 x 740	AURE16S2	○	●
(1800) 1800 x 1600 x 740	AURE18S2	○	●

**QS:** Quick Ship | **GROUP A:** Subject to a longer lead time.

● Available  
○ Not Available

## SET OF 4 DESKS (AVAILABLE IN 600 & 800 DEEP)

### WAVE DESK

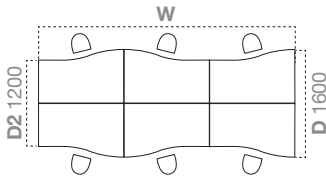


W x D x D2 x H (mm)	Code	QS	Grp A
<b>600 Deep</b>			
(1200) 2400 x 1600 x 1200 x 740	AUSW12S4	○	●
(1400) 2800 x 1600 x 1200 x 740	AUSW14S4	○	●
(1600) 3200 x 1600 x 1200 x 740	AUSW16S4	○	●
(1800) 3600 x 1600 x 1200 x 740	AUSW18S4	○	●
<b>800 Deep</b>			
(1200) 2400 x 2000 x 1600 x 740	AUWW12S4	○	●
(1400) 2800 x 2000 x 1600 x 740	AUWW14S4	○	●
(1600) 3200 x 2000 x 1600 x 740	AUWW16S4	○	●
(1800) 3600 x 2000 x 1600 x 740	AUWW18S4	○	●

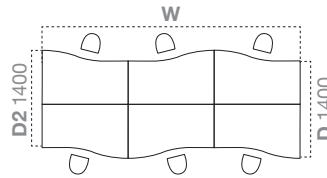
Please add your wave hand options to your code when ordering **A, B** or **C** eg: AUSW12S6A  
Please note add the wave hand code before the finish option codes.

### WAVE HAND OPTIONS

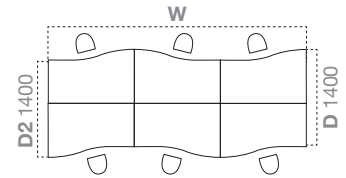
#### 600 Deep



Option A



Option B



Option C

### RECTANGULAR DESK



W x D x H (mm)	Code	QS	Grp A
<b>600 Deep</b>			
(1200) 2400 x 1200 x 740	AURS12S4	○	●
(1400) 2800 x 1200 x 740	AURS14S4	○	●
(1600) 3200 x 1200 x 740	AURS16S4	○	●
(1800) 3600 x 1200 x 740	AURS18S4	○	●
<b>800 Deep</b>			
(1200) 2400 x 1600 x 740	AURE12S4	○	●
(1400) 2800 x 1600 x 740	AURE14S4	○	●
(1600) 3200 x 1600 x 740	AURE16S4	○	●
(1800) 3600 x 1600 x 740	AURE18S4	○	●

**QS:** Quick Ship | **GROUP A:** Subject to a longer lead time.

● Available  
○ Not Available

## SET OF 6 DESKS (AVAILABLE IN 600 & 800 DEEP)

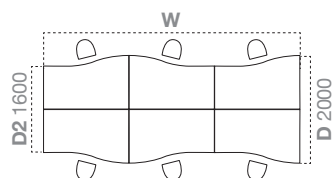
### WAVE DESK



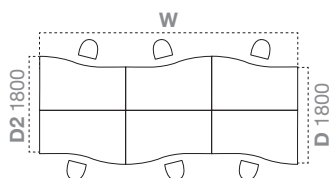
W x H (mm) (See D x D2 below)	Code	QS	Grp A
<b>600 Deep</b>			
(1200) 3600 x 740	AUSW12S6	○	●
(1400) 4200 x 740	AUSW14S6	○	●
(1600) 4800 x 740	AUSW16S6	○	●
(1800) 5400 x 740	AUSW18S6	○	●
<b>800 Deep</b>			
(1200) 3600 x 740	AUWW12S6	○	●
(1400) 4200 x 740	AUWW14S6	○	●
(1600) 4800 x 740	AUWW16S6	○	●
(1800) 5400 x 740	AUWW18S6	○	●

Please add your wave hand options to your code when ordering **A, B** or **C** eg: AUSW12S6A  
Please note add the wave hand code before the finish option codes.

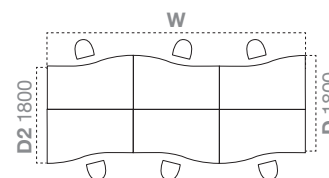
#### 800 Deep



Option A



Option B



Option C

### RECTANGULAR DESK



W x D x H (mm)	Code	QS	Grp A
<b>600 Deep</b>			
(1200) 3600 x 1200 x 740	AURS12S6	○	●
(1400) 4200 x 1200 x 740	AURS14S6	○	●
(1600) 4800 x 1200 x 740	AURS16S6	○	●
(1800) 5400 x 1200 x 740	AURS18S6	○	●
<b>800 Deep</b>			
(1200) 3600 x 1600 x 740	AURE12S6	○	●
(1400) 4200 x 1600 x 740	AURE14S6	○	●
(1600) 4800 x 1600 x 740	AURE16S6	○	●
(1800) 5400 x 1600 x 740	AURE18S6	○	●

**QS:** Quick Ship | **GROUP A:** Subject to a longer lead time.

● Available  
○ Not Available

## SET OF 8 DESKS (AVAILABLE IN 600 & 800 DEEP)

### WAVE DESK



W x D x D2 x H (mm)	Code	QS	Grp A
<b>600 Deep</b>			
(1200) 4800 x 1600 x 1200 x 740	AUSW12S8	○	●
(1400) 5600 x 1600 x 1200 x 740	AUSW14S8	○	●
(1600) 6400 x 1600 x 1200 x 740	AUSW16S8	○	●
(1800) 7200 x 1600 x 1200 x 740	AUSW18S8	○	●
<b>800 Deep</b>			
(1200) 4800 x 2000 x 1600 x 740	AUWW12S8	○	●
(1400) 5600 x 2000 x 1600 x 740	AUWW14S8	○	●
(1600) 6400 x 2000 x 1600 x 740	AUWW16S8	○	●
(1800) 7200 x 2000 x 1600 x 740	AUWW18S8	○	●

### RECTANGULAR DESK



W x D x H (mm)	Code	QS	Grp A
<b>600 Deep</b>			
(1200) 4800 x 1200 x 740	AURS12S8	○	●
(1400) 5600 x 1200 x 740	AURS14S8	○	●
(1600) 6400 x 1200 x 740	AURS16S8	○	●
(1800) 7200 x 1200 x 740	AURS18S8	○	●
<b>800 Deep</b>			
(1200) 4800 x 1600 x 740	AURE12S8	○	●
(1400) 5600 x 1600 x 740	AURE14S8	○	●
(1600) 6400 x 1600 x 740	AURE16S8	○	●
(1800) 7200 x 1600 x 740	AURE18S8	○	●





**QS:** Quick Ship | **GROUP A:** Subject to a longer lead time.

- Available
- Not Available

## SET OF PLUS 2 DESKS (AVAILABLE IN 600 & 800 DEEP)

You can add a Plus 2 desk to extend any configuration and create a cost effective run of desks.

### WAVE DESK

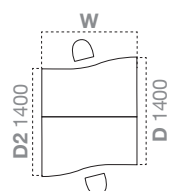


W x H (mm) (See D x D2 below)		Code	QS	Grp A
<b>600 Deep</b>				
(1200)	1200 x 740	AUSW12P2	○	●
(1400)	1400 x 740	AUSW14P2	○	●
(1600)	1600 x 740	AUSW16P2	○	●
(1800)	1800 x 740	AUSW18P2	○	●
<b>800 Deep</b>				
(1200)	1200 x 740	AUWV12P2	○	●
(1400)	1400 x 740	AUWV14P2	○	●
(1600)	1600 x 740	AUWV16P2	○	●
(1800)	1800 x 740	AUWV18P2	○	●

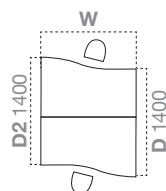
Please add your wave hand options to your code when ordering **A, B or C** eg: AUSW12P2A  
**Please note:** Add the wave hand code before the finish option codes.

### WAVE HAND OPTIONS

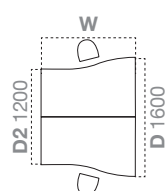
#### 600 Deep



Option A

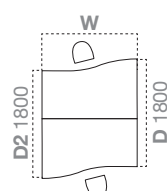


Option B

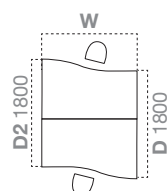


Option C

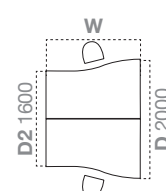
#### 800 Deep



Option A



Option B



Option C

### RECTANGULAR DESK



W x D x H (mm)		Code	QS	Grp A
<b>600 Deep</b>				
(1200)	1200 x 1200 x 740	AURS12P2	○	●
(1400)	1400 x 1200 x 740	AURS14P2	○	●
(1600)	1600 x 1200 x 740	AURS16P2	○	●
(1800)	1800 x 1200 x 740	AURS18P2	○	●
<b>800 Deep</b>				
(1200)	1200 x 1600 x 740	AURE12P2	○	●
(1400)	1400 x 1600 x 740	AURE14P2	○	●
(1600)	1600 x 1600 x 740	AURE16P2	○	●
(1800)	1800 x 1600 x 740	AURE18P2	○	●

**QS:** Quick Ship | **GROUP A:** Subject to a longer lead time.

● Available  
○ Not Available

## RETURN DESK



W x D x H (mm)	Code	QS	Grp A
800 x 600 x 740mm	AUDR80	○	●
1000 x 600 x 740mm	AUDR10	○	●
1200 x 600 x 740mm	AUDR12	○	●

Add a return desk to any AuraBench configuration to create a convenient additional workspace.

## TABLES



W x D x H (mm)	Code	QS	Grp A
1200 x 1200 x 740mm	AUBT12BF	○	●
1800 x 1200 x 740mm	AUBT18BF	○	●
2400 x 1200 x 740mm	AUBT24BF	○	●

Our meeting tables have the same stylish floating top and curved frame design as our AuraBench desking range.

## PEDESTALS



Steel Mobile Narrow  
3 Drawer



Steel Mobile  
3 Drawer



Mobile  
2 Drawer



Mobile  
3 Drawer



Narrow Under Desk  
3 Drawer\*

Pedestal	W x D x H (mm)	Finishes	2 Drawer	3 Drawer	QS	Grp A
Steel Mobile Narrow	300 x 570 x 600	Silver	–	AUNP57STD3S	○	●
Steel Mobile Narrow	300 x 570 x 600	White	–	AUNP57STD3W	○	●
Steel Mobile	420 x 570 x 600	Silver	–	AUMP57STD3S	○	●
Steel Mobile	420 x 570 x 600	White	–	AUMP57STD3W	○	●
Mobile	430 x 600 x 542	See wood finishes	AUMP60D2	AUMP60D3	○	●
Narrow Under Desk *	310 x 555 x 680	See wood finishes	–	STNP60D3	○	●

**Note:** Pedestals are supplied with Bow Handles as standard. Alternative designs are available - see page 127 for details.

All pedestals are supplied empty - for internal accessories also see page 127.

\* Narrow under desk not suitable for use with 1200mm desks.



**QS:** Quick Ship | **GROUP A:** Subject to a longer lead time.

● Available  
○ Not Available

### ACTIVE PEDESTAL



2 Drawer

3 Drawer

Pedestal with Silver Handle	W x D x H (mm)	Code	QS	Grp A
2 Drawer	400 x 600 x 580	AVMP60D2	○	●
3 Drawer	400 x 600 x 580	AVMP60D3	○	●

Full details see pages 208-210. Cushion sold separately.

### ACTIVE CADDY



Caddy with Silver Handle	W x D x H (mm)	Code	QS	Grp A
With Doors	800 x 400 x 580	AVMC80SD	○	●
Without Doors	800 x 400 x 580	AVMC80ND	○	●

Full details see pages 208-210. Cushion sold separately.

### CUSHIONS



Pedestal Cushion

Caddy Cushion

Cushion	W x D x H (mm)	Code	Group 1	Group 2	Group 3	Group 4	Group 5+
Pedestal	400 x 600 x 30	AVMPCU60G					
Caddy	400 x 400 x 30	AVMCCU80G					

Full details see pages 208-210. For fabric options see page 254-259.







## CABLE MANAGEMENT

AuraBench systems are supplied with integrated cable management to span the full width of the configuration. Additional cable management and accessories are available to purchase separately.

### VERTICAL CABLE TOWER

Designed to offer complete vertical wire management, which can be fitted to group configurations to provide a seamless and integrated solution.

### INTEGRATED CABLE TRAY

(comes as standard)

Designed to be pieced together concealing visible wiring with ease.



## VERSATILITY & FLEXIBILITY

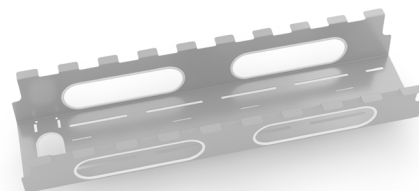
AuraBench's cable management options are key to the range's versatility. Unlike many alternative solutions, AuraBench allows easy access to IT and power cables without needing to remove the desktop or rely on sliding top access mechanisms.



IT and power cables can be readily accessed through the large 'portholes'.

The cable management tray is angled to provide easy access.

The option of a flat integrated cable tray section overcomes the common issue with many cable management systems. It is specifically designed to accommodate large electrical units – such as network devices or transformer plugs.



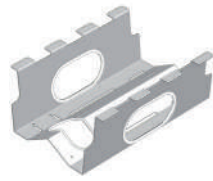


**QS:** Quick Ship | **GROUP A:** Subject to a longer lead time.

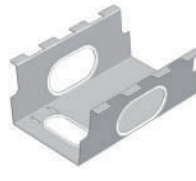
● Available  
○ Not Available



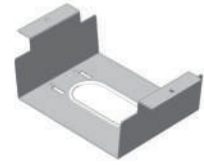
Vertical Cable Tower



Integrated Cable Tray (comes as standard)



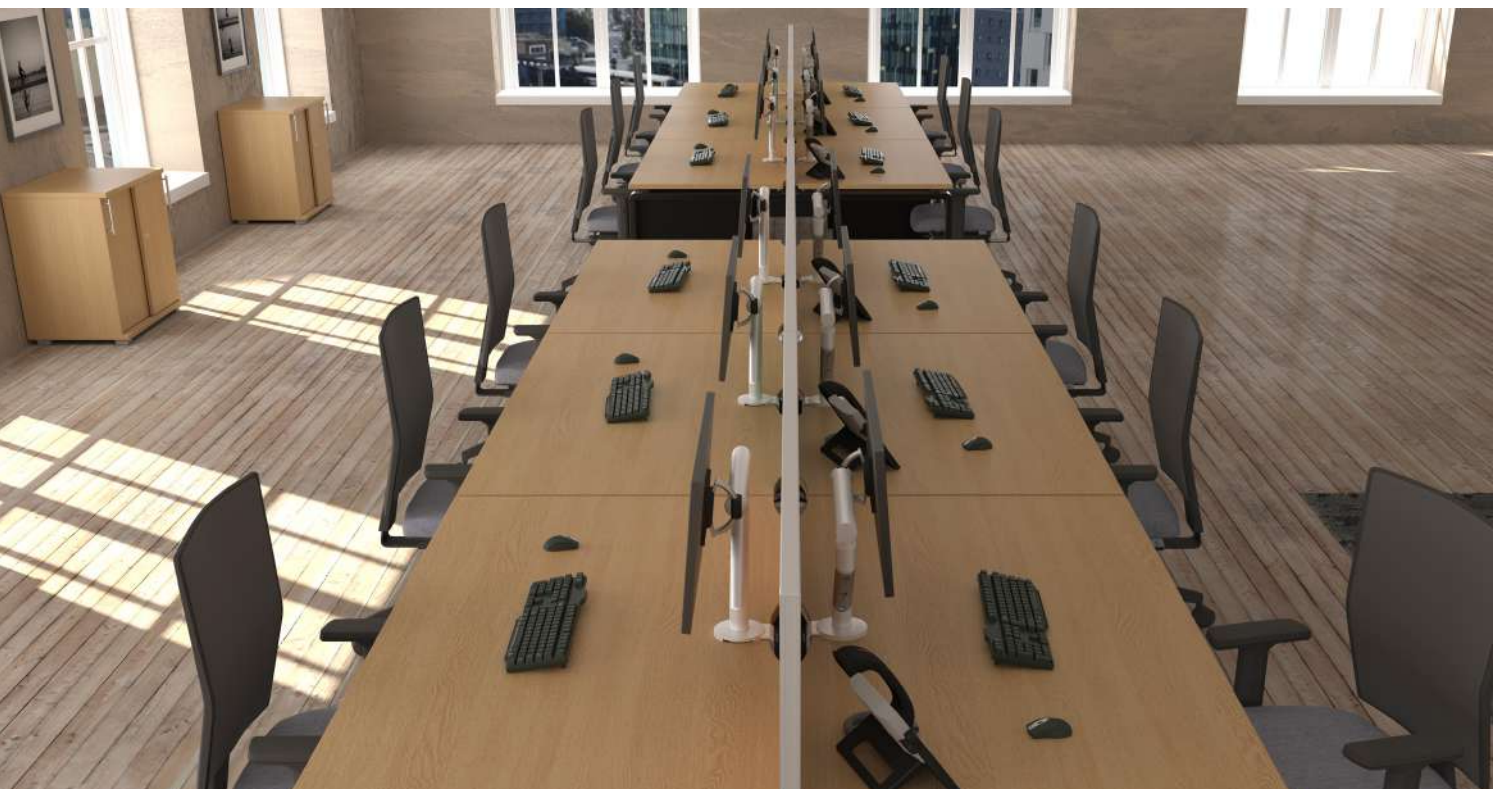
Flat Integrated Cable Tray



Cable Tray Linking Unit

Cable Management	Description	Colour	Code	QS	Grp A
Vertical Cable Tower	Designed to offer complete vertical wire management. To be fitted to any join where integrated horizontal cable management is present. Not suitable for use on the single desk.	Silver, White	AUCTOWER	○	●
Integrated Cable Tray (comes as standard)	Designed to piece together for a perfect result. The integrated cable tray can be connected with the cable tray linking unit and flat cable tray if required. Not suitable for use on the single desk.	Silver, White			
410mm	1 x 410mm and 1 x 610mm cable tray fits a 1200mm desk.		AUCTRAY410	○	●
610mm	2 x 610mm cable trays fit a 1400mm desk.		AUCTRAY610	○	●
810mm	1 x 810mm and 1 x 610mm cable tray fits a 1600mm desk.		AUCTRAY810	○	●
1010mm	1 x 1010mm and 1 x 610mm cable tray fits an 1800mm desk.		AUCTRAY1010	○	●
Flat Integrated Cable Tray, 400mm	The flat integrated cable tray is designed to place large electrical items such as network devices or transformer plugs. Not suitable for use on the single desk.	Silver, White	AUCTRAYF400	○	●
Cable Tray Linking Unit, 180mm (Required to be used with Vertical Cable Tower)	Designed to be positioned above a vertical cable tower to neatly guide the wires through to the cable tower. Not suitable for use on the single desk.	Silver, White	AUCTRAYLINK	○	●

Please add your colour suffix of **S** or **W** to the end of your code where the choice is available.







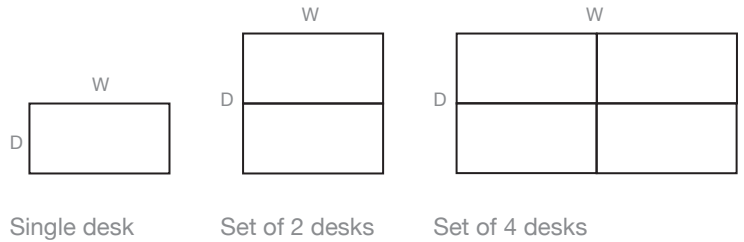
GEO



# Features & Details

- Simple clean lines.
- Robust design for busy, high volume, multi-use environments making it ideal for hot desking.
- The inset, intermediate leg adds further strength on sets of 4 desks and freedom of movement.
- Optional slot-in cable management.
- 25mm worksurfaces.

## DESK SHAPES

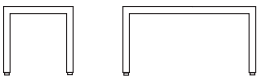


## SPECIFICATION

- Sleek, clean lines with 'floating' worksurface.
- Stylish angular end frame made from heavy gauge steel tube for extra strength.
- The intermediate leg adds further strength and support on sets of 4 desks.
- Height levelling feet.
- 25mm worksurfaces.

## FRAME

- Modern goalpost bench style leg frame.



## CABLE PORTS

- All desks are fitted with two grey rectangular cable ports, excluding white desktops which have white cable ports.

## PEDESTAL SPECIFICATION

- 25mm top with an 18mm unit and drawer fronts.
- 25kg drawer runners.
- Narrow pedestal available, 18mm complete unit.
- Integral central locking, 2 keys are supplied.
- Silver bow handles.
- Height levelling feet / castors as standard.
- Steel pedestal available.



All Geo is available with optional cable trays which slot easily into place upon assembly.

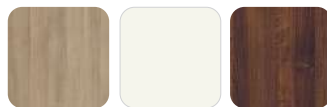
## QUICK SHIP

### Metal Finishes



W White

### Wood Finishes



BI Birch      WH White      WA Walnut

Wood finishes are heat, stain and scratch resistant when used for their intended purposes.

Please add the metal and wood suffix to your code when ordering eg: GERE12S4BFWBI

## GROUP A

### Metal Finishes

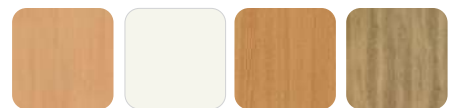


S Silver      W White

### Wood Finishes



BI Birch      MA Maple      WA Walnut      NN Natural Nebraska Oak



BE Beech      WH White      LO Light Oak      GN Grey Nebraska Oak

QS: Quick Ship | **GROUP A:** Subject to a longer lead time.

- Available
- Not Available



## SINGLE DESK



W x D x H (mm)	Code	QS	Grp A
1200 x 800 x 740	GERE12S1BF	○	●
1400 x 800 x 740	GERE14S1BF	○	●
1600 x 800 x 740	GERE16S1BF	○	●

## SET OF 2 DESKS



W x D x H (mm)	Code	QS	Grp A
<b>(1200)</b> 1200 x 1605 x 740	GERE12S2BF	●	●
<b>(1400)</b> 1400 x 1605 x 740	GERE14S2BF	●	●
<b>(1600)</b> 1600 x 1605 x 740	GERE16S2BF	●	●

## SET OF 4 DESKS



W x D x H (mm)	Code	QS	Grp A
<b>(1200)</b> 2400 x 1605 x 740	GERE12S4BF	●	●
<b>(1400)</b> 2800 x 1605 x 740	GERE14S4BF	●	●
<b>(1600)</b> 3200 x 1605 x 740	GERE16S4BF	●	●

## PEDESTALS

Personal storage solutions for the working office.



Steel Mobile Narrow  
3 Drawer



Steel Mobile  
3 Drawer



Mobile  
2 Drawer



Mobile  
3 Drawer



Narrow Under Desk  
3 Drawer

Pedestal	W x D x H (mm)	Finishes	2 Drawer	3 Drawer	QS	Grp A
Steel Mobile Narrow	300 x 570 x 600	Silver	–	AUNP57STD3S	○	●
Steel Mobile Narrow	300 x 570 x 600	White	–	AUNP57STD3W	○	●
Steel Mobile	420 x 570 x 600	Silver	–	AUMP57STD3S	○	●
Steel Mobile	420 x 570 x 600	White	–	AUMP57STD3W	○	●
Mobile	400 x 600 x 542	See Wood Finishes	STMP60D2	STMP60D3	●	●
Narrow Under Desk	310 x 555 x 680	See Wood Finishes	–	STNP60D3	●	●

**Note:** Pedestals are supplied with Bow Handles as standard. Alternative designs are available - see page 127 for details. All pedestals are supplied empty - for internal accessories see page 127.



**QS:** Quick Ship | **GROUP A:** Subject to a longer lead time.

● Available  
○ Not Available



## ACTIVE PEDESTAL



2 Drawer

3 Drawer

Pedestal with Silver Handle	W x D x H (mm)	Code	QS	Grp A
2 Drawer	400 x 600 x 580	AVMP60D2	○	●
3 Drawer	400 x 600 x 580	AVMP60D3	○	●

Full details see pages 208-210. Cushion sold separately.

## ACTIVE CADDY



Caddy with Silver Handle	W x D x H (mm)	Code	QS	Grp A
With Doors	800 x 400 x 580	AVMC80SD	○	●
Without Doors	800 x 400 x 580	AVMC80ND	○	●

Full details see pages 208-210. Cushion sold separately.

## CUSHIONS



Pedestal Cushion

Caddy Cushion

Cushion	W x D x H (mm)	Code	Group 1	Group 2	Group 3	Group 4	Group 5+
Pedestal	400 x 600 x 30	AVMPCU60G					
Caddy	400 x 400 x 30	AVMCCU80G					

Full details see pages 208-210. For fabric options see page 254-259.

## CABLE TRAYS

All Geo cable trays are available in white to match the desk frame.

### CABLE TRAY



W x D x H (mm)	Code	QS	Grp A
1200 x 134 x 152	GECTRAY12	●	●
1400 x 134 x 152	GECTRAY14	●	●
1600 x 134 x 152	GECTRAY16	●	●



# DOMINOBEAM

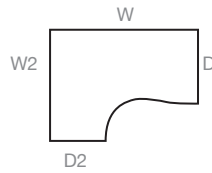




# Features & Details

- Robust, sturdy design.
- Choice of shapes and configurations.
- Integrated, easy access cable management.
- Optional metal or wood modesty panel.
- 25mm worksurface.

## DESK SHAPES



Crescent  
(Left hand shown)



Wave  
(Left hand shown)



Rectangular

## SPECIFICATION

- 25mm desk top made from grade E1 melamine faced high density particle board.
- A round corner leg features on the crescent desk only.
- Height levelling feet as standard.
- Heavy duty centre rails provide extra rigidity.
- An additional metal or wood modesty panel is available separately.
- 'Plus One' feature available. Leg sharing between adjacent desk for maximum flexibility.

## FRAME & CABLE PORTS

- 2 oval silver effect cable ports.
- A cable managed beam frame.

## PEDESTAL SPECIFICATION

- 25mm top with an 18mm unit.
- Silver bow handles.
- Integral central locking, 2 keys are supplied.
- Height levelling feet / castors are supplied.

## CABLE MANAGEMENT

- The beam leg system is supplied with integrated cable trunking.
- The universal leg can be positioned to provide left or right access to the cable management.
- Removable cover plates feature on the inside of each leg allowing the wires to be easily concealed.



## PLUS ONE DESKS

Plus one desks share one of its legs with another existing Domino desk, offering maximum flexibility and space efficient desking.



## QUICK SHIP

### Not Available

Wood finishes are heat, stain and scratch resistant when used for their intended purposes.

Please add the metal and wood suffix to your code when ordering eg: DMCR14LSBI

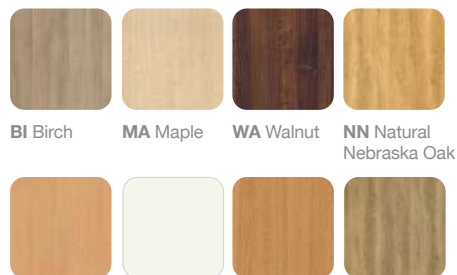
## GROUP A

### Metal Finishes



S Silver W White

### Wood Finishes



BI Birch MA Maple WA Walnut NN Natural Nebraska Oak  
BE Beech WH White LO Light Oak GN Grey Nebraska Oak



**QS:** Quick Ship | **GROUP A:** Subject to a longer lead time.

● Available  
○ Not Available

## CRESCENT DESK



Crescent Desk



Crescent Plus 1 Desk

W x W2 x D x D2 x H (mm)	Left Hand	Right Hand	QS	Grp A
1400 x 1200 x 800 x 600 x 725	DMCR14L	DMCR14R	○	●
1600 x 1200 x 800 x 600 x 725	DMCR16L	DMCR16R	○	●
1800 x 1200 x 800 x 600 x 725	DMCR18L	DMCR18R	○	●
<b>Plus 1 Desk</b>				
1400 x 1200 x 800 x 600 x 725	DMCR14P1L	DMCR14P1R	○	●
1600 x 1200 x 800 x 600 x 725	DMCR16P1L	DMCR16P1R	○	●
1800 x 1200 x 800 x 600 x 725	DMCR18P1L	DMCR18P1R	○	●

## WAVE DESK

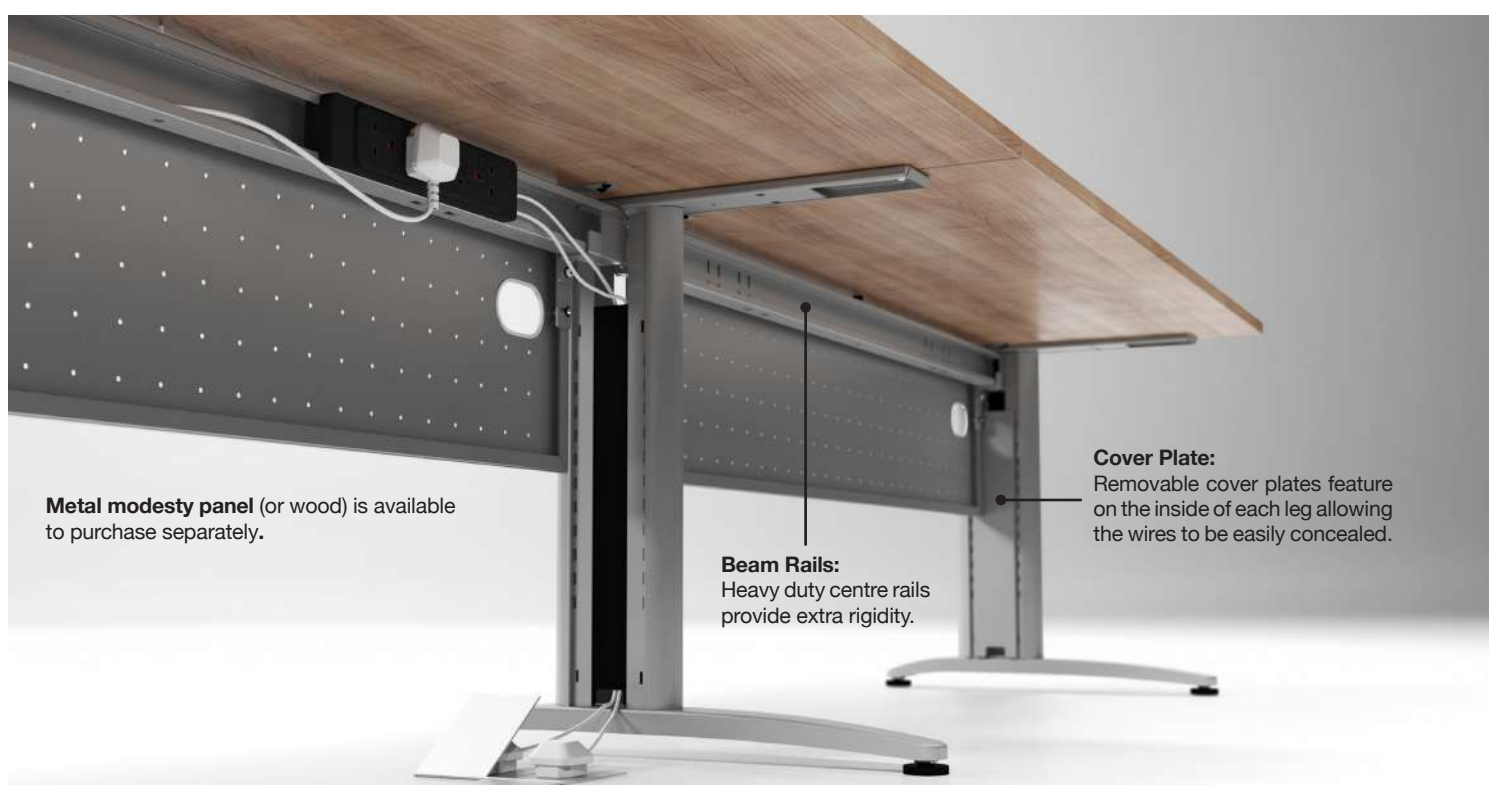


Wave Desk



Wave Plus 1 Desk

W x D x D2 x H (mm)	Left Hand	Right Hand	QS	Grp A
1200 x 1000 x 800 x 725	DMWW12L	DMWW12R	○	●
1400 x 1000 x 800 x 725	DMWW14L	DMWW14R	○	●
1600 x 1000 x 800 x 725	DMWW16L	DMWW16R	○	●
1800 x 1000 x 800 x 725	DMWW18L	DMWW18R	○	●
<b>Plus 1 Desk</b>				
1200 x 1000 x 800 x 725	DMWW12P1L	DMWW12P1R	○	●
1400 x 1000 x 800 x 725	DMWW14P1L	DMWW14P1R	○	●
1600 x 1000 x 800 x 725	DMWW16P1L	DMWW16P1R	○	●
1800 x 1000 x 800 x 725	DMWW18P1L	DMWW18P1R	○	●



**Metal modesty panel** (or wood) is available to purchase separately.

**Beam Rails:**  
Heavy duty centre rails provide extra rigidity.

**Cover Plate:**  
Removable cover plates feature on the inside of each leg allowing the wires to be easily concealed.

**QS:** Quick Ship | **GROUP A:** Subject to a longer lead time.

● Available  
○ Not Available



## RECTANGULAR DESK



Rectangular Desk



Rectangular Plus 1 Desk

W x D x H (mm)	Code	QS	Grp A
1200 x 800 x 725	DMRE12	○	●
1400 x 800 x 725	DMRE14	○	●
1600 x 800 x 725	DMRE16	○	●
1800 x 800 x 725	DMRE18	○	●
<b>Plus 1 Desk</b>			
1200 x 800 x 725	DMRE12P1	○	●
1400 x 800 x 725	DMRE14P1	○	●
1600 x 800 x 725	DMRE16P1	○	●
1800 x 800 x 725	DMRE18P1	○	●

## TABLES

Stylish meeting table to complement the DominoBeam range. A Plus 1 option to extend the table length is also available.

### RECTANGULAR TABLE



Rectangular Table



Rectangular Table, Plus 1 Desk

W x D x H (mm)	Code	QS	Grp A
1800 x 800 x 725	DMBT18BF	○	●
2400 x 800 x 725	DMBT24BF	○	●
<b>Plus 1 Table</b>			
1800 x 800 x 725	DMBT18BFP	○	●
2400 x 800 x 725	DMBT24BFP	○	●

**QS:** Quick Ship | **GROUP A:** Subject to a longer lead time.

● Available  
○ Not Available

## MODESTY PANEL

2 modesty panels are recommended for crescent desks.



Metal Modesty



Wooden Modesty

Modesty Panel	W x H (mm)	QS	Grp A	Metal Modesty	Wooden Modesty	
Fits Crescent	1200 x 350	LH	○	●	DMCRMMP12L	DMCRWMP12L
Fits Crescent	1400 x 350	LH	○	●	DMCRMMP14L	DMCRWMP14L
Fits Crescent	1600 x 350	LH	○	●	DMCRMMP16L	DMCRWMP16L
Fits Crescent	1800 x 350	LH	○	●	DMCRMMP18L	DMCRWMP18L
Fits Crescent	1200 x 350	RH	○	●	DMCRMMP12R	DMCRWMP12R
Fits Crescent	1400 x 350	RH	○	●	DMCRMMP14R	DMCRWMP14R
Fits Crescent	1600 x 350	RH	○	●	DMCRMMP16R	DMCRWMP16R
Fits Crescent	1800 x 350	RH	○	●	DMCRMMP18R	DMCRWMP18R
Fits Wave / Rectangular	1200 x 350	-	○	●	DMREMMP12	DMRREWMP12
Fits Wave / Rectangular	1400 x 350	-	○	●	DMREMMP14	DMRREWMP14
Fits Wave / Rectangular	1600 x 350	-	○	●	DMREMMP16	DMRREWMP16
Fits Wave / Rectangular	1800 x 350	-	○	●	DMREMMP18	DMRREWMP18

## PEDESTALS

Personal storage solutions for the working office.



Steel Mobile  
Narrow 3 Drawer



Steel Mobile  
3 Drawer



Mobile  
2 Drawer



Mobile  
3 Drawer



Desk High,  
600D 3 Drawer



Desk High,  
600D 4 Drawer

Pedestal	W x D x H (mm)	Finishes	2 Drawer	3 Drawer	4 Drawer	QS	Grp A
Steel Mobile Narrow	300 x 570 x 600	Silver	-	DMSN57ST3S	-	○	●
Steel Mobile Narrow	300 x 570 x 600	White	-	DMSN57ST3W	-	○	●
Steel Mobile	420 x 570 x 600	Silver	-	DMMP57ST3S	-	○	●
Steel Mobile	420 x 570 x 600	White	-	DMMP57ST3W	-	○	●
Mobile	430 x 600 x 542	See wood finishes	DMMP60D2	DMMP60D3	-	○	●
Desk High, 600 Deep	400 x 600 x 725	See wood finishes	-	DMDP60D3	DMDP60D4	○	●
Desk High, 800 Deep	400 x 800 x 725	See wood finishes	-	DMDP80D3	DMDP80D4	○	●

**Note:** Pedestals are supplied with Bow Handles as standard. Alternative designs are available - see page 127 for details.

All pedestals are supplied empty - for internal accessories see page 127.



**QS:** Quick Ship | **GROUP A:** Subject to a longer lead time.

● Available  
○ Not Available

### ACTIVE PEDESTAL



2 Drawer

3 Drawer

Pedestal with Silver Handle	W x D x H (mm)	Code	QS	Grp A
2 Drawer	400 x 600 x 580	AVMP60D2	○	●
3 Drawer	400 x 600 x 580	AVMP60D3	○	●

Full details see pages 208-210. Cushion sold separately.

### ACTIVE CADDY



Caddy with Silver Handle	W x D x H (mm)	Code	QS	Grp A
With Doors	800 x 400 x 580	AVMC80SD	○	●
Without Doors	800 x 400 x 580	AVMC80ND	○	●

Full details see pages 208-210. Cushion sold separately.

### CUSHIONS



Pedestal Cushion

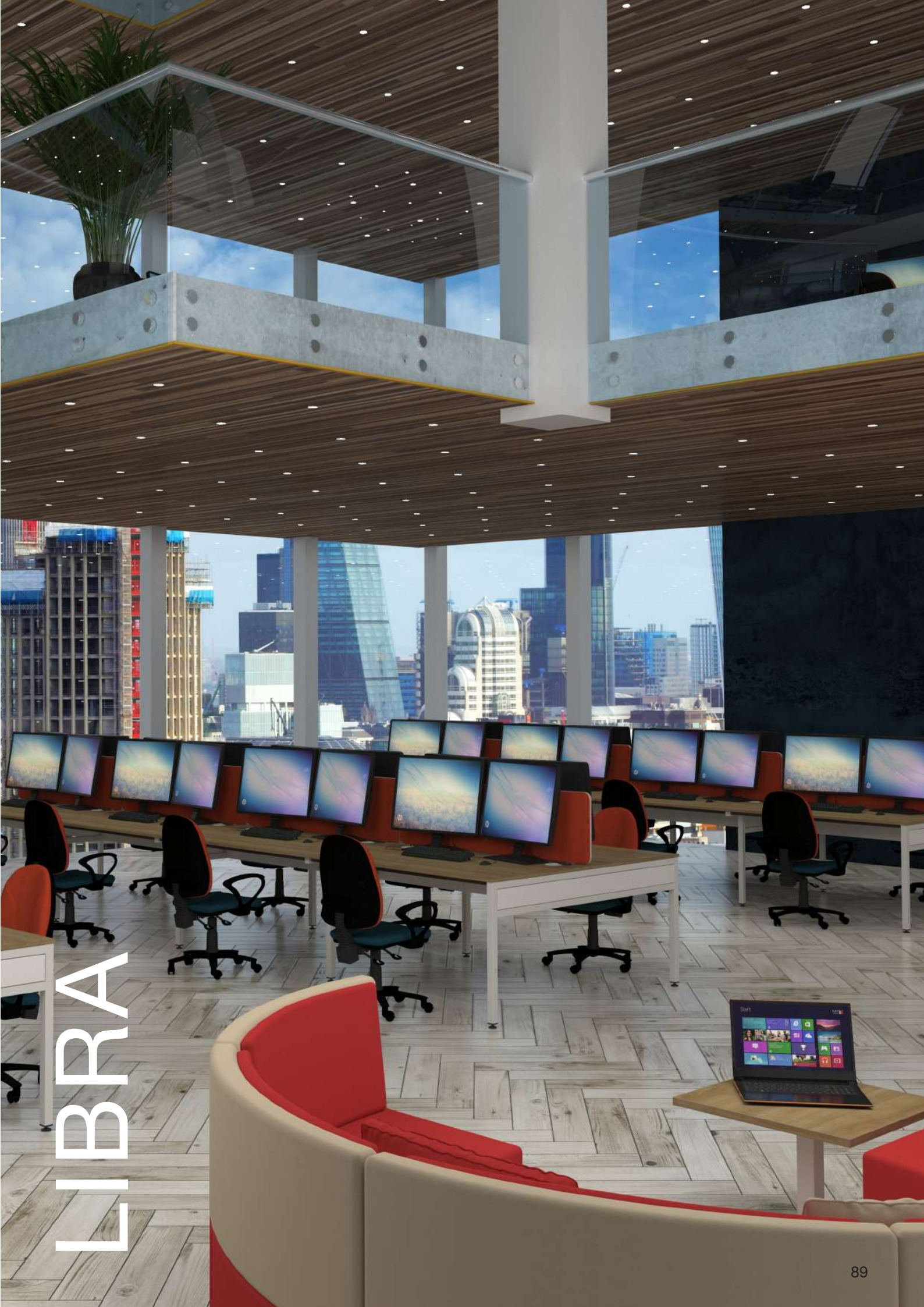
Caddy Cushion

Cushion	W x D x H (mm)	Code	Group 1	Group 2	Group 3	Group 4	Group 5+
Pedestal	400 x 600 x 30	AVMPCU60G					
Caddy	400 x 400 x 30	AVMCCU80G					

Full details see pages 208-210. For fabric options see page 254-259.







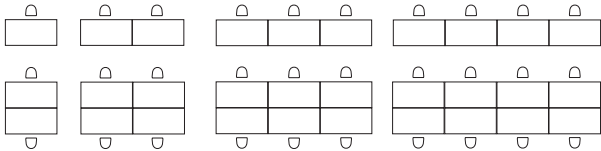
# LIBBRA





# Features & Details

- Modern, sleek design.
- Cost effective, scaleable solution.
- Integrated end panel for neat, stylish appearance.
- Optional cable management.
- Linear and bench desking configurations.
- 18mm worksurfaces.

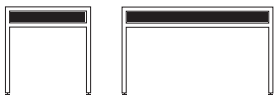


## SPECIFICATION

- 18mm top made from grade E1 melamine faced high density particle board.
- Modular construction allows additional workstations to be added when required.
- End frames are supplied with an infill panel that matches the colour of the legs.
- Linear desks supplied with a modesty panel as standard.
- Height levelling feet are supplied.
- Designed for easy installation.

## FRAME

- Structural steel frame with an intermediate leg adding strength and stability.



## CABLE MANAGEMENT

- Cable management trays are available to purchase separately for all desks and benches.

## CABLE PORTS

- All desks feature two round cable ports matching the leg colour (white/white, silver/grey).

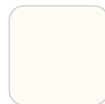
## PEDESTAL SPECIFICATION

- 25mm top with an 18mm unit and drawer fronts.
- 25kg drawer runners.
- Narrow pedestal 18mm complete unit.
- Integral central locking, 2 keys are supplied.
- Silver bow handles.
- Height levelling feet / castors as standard.



## QUICK SHIP

### Metal Finishes

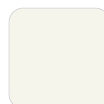


W White

### Wood Finishes



BE Beech



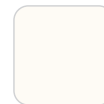
WH White

## GROUP A

### Metal Finishes

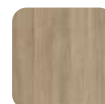


S Silver



W White

### Wood Finishes



BI Birch



MA Maple



WA Walnut

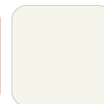


NN Natural Nebraska Oak

Please add the metal and wood suffix to your code when ordering eg:  
LBRE16D1WBE



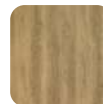
BE Beech



WH White



LO Light Oak



GN Grey Nebraska Oak

Wood finishes are heat, stain and scratch resistant when used for their intended purposes.



QS: Quick Ship | GROUP A: Subject to a longer lead time.

- Available
- Not Available



## LINEAR DESKING

### DESK, SINGLE



W x D x H (mm)	Code	QS	Grp A
1200 x 800 x 740	LBRE12D1	●	●
1400 x 800 x 740	LBRE14D1	●	●
1600 x 800 x 740	LBRE16D1	●	●

### DESK, SET OF 2



W x D x H (mm)	Code	QS	Grp A
<b>(1200)</b> 2400 x 800 x 740	LBRE12D2	●	●
<b>(1400)</b> 2800 x 800 x 740	LBRE14D2	●	●
<b>(1600)</b> 3200 x 800 x 740	LBRE16D2	●	●

### DESK, SET OF 3



W x D x H (mm)	Code	QS	Grp A
<b>(1200)</b> 3600 x 800 x 740	LBRE12D3	●	●
<b>(1400)</b> 4200 x 800 x 740	LBRE14D3	●	●
<b>(1600)</b> 4800 x 800 x 740	LBRE16D3	●	●

### DESK, SET OF 4



W x D x H (mm)	Code	QS	Grp A
<b>(1200)</b> 4800 x 800 x 740	LBRE12D4	●	●
<b>(1400)</b> 5600 x 800 x 740	LBRE14D4	●	●
<b>(1600)</b> 6400 x 800 x 740	LBRE16D4	●	●



**QS:** Quick Ship | **GROUP A:** Subject to a longer lead time.

● Available  
○ Not Available



## BENCH DESKING

### BENCH, SET OF 2



W x D x H (mm)	Code	QS	Grp A
<b>(1200)</b> 1200 x 1600 x 740	LBRE12B2	●	●
<b>(1400)</b> 1400 x 1600 x 740	LBRE14B2	●	●
<b>(1600)</b> 1600 x 1600 x 740	LBRE16B2	●	●

### BENCH, SET OF 4



W x D x H (mm)	Code	QS	Grp A
<b>(1200)</b> 2400 x 1600 x 740	LBRE12B4	●	●
<b>(1400)</b> 2800 x 1600 x 740	LBRE14B4	●	●
<b>(1600)</b> 3200 x 1600 x 740	LBRE16B4	●	●

### BENCH, SET OF 6



W x D x H (mm)	Code	QS	Grp A
<b>(1200)</b> 3600 x 1600 x 740	LBRE12B6	●	●
<b>(1400)</b> 4200 x 1600 x 740	LBRE14B6	●	●
<b>(1600)</b> 4800 x 1600 x 740	LBRE16B6	●	●

### BENCH, SET OF 8



W x D x H (mm)	Code	QS	Grp A
<b>(1200)</b> 4800 x 1600 x 740	LBRE12B8	●	●
<b>(1400)</b> 5600 x 1600 x 740	LBRE14B8	●	●
<b>(1600)</b> 6400 x 1600 x 740	LBRE16B8	●	●



QS: Quick Ship | GROUP A: Subject to a longer lead time.

- Available
- Not Available



## PEDESTALS

Personal storage solutions for the working office.



Steel Mobile Narrow  
3 Drawer



Steel Mobile  
3 Drawer



Mobile  
2 Drawer



Mobile  
3 Drawer



Narrow Under Desk  
3 Drawer

Pedestal	W x D x H (mm)	Finishes	2 Drawer	3 Drawer	QS	Grp A
Steel Mobile Narrow	300 x 570 x 600	Silver	–	AUNP57STD3S	○	●
Steel Mobile Narrow	300 x 570 x 600	White	–	AUNP57STD3W	○	●
Steel Mobile	420 x 570 x 600	Silver	–	AUMP57STD3S	○	●
Steel Mobile	420 x 570 x 600	White	–	AUMP57STD3W	○	●
Mobile	400 x 600 x 542	See Wood Finishes	STMP60D2	STMP60D3	●	●
Narrow Under Desk	310 x 555 x 680	See Wood Finishes	–	STNP60D3	●	●

Note: Pedestals are supplied with Bow Handles as standard. Alternative designs are available - see page 127 for details. All pedestals are supplied empty - for internal accessories see page 127.

## ACTIVE PEDESTAL



2 Drawer

3 Drawer

Pedestal with Silver Handle	W x D x H (mm)	Code	QS	Grp A
2 Drawer	400 x 600 x 580	AVMP60D2	○	●
3 Drawer	400 x 600 x 580	AVMP60D3	○	●

Full details see pages 208-210. Cushion sold separately.

## ACTIVE CADDY



Caddy with Silver Handle	W x D x H (mm)	Code	QS	Grp A
With Doors	800 x 400 x 580	AVMC80SD	○	●
Without Doors	800 x 400 x 580	AVMC80ND	○	●

Full details see pages 208-210. Cushion sold separately.

## CUSHIONS



Pedestal Cushion

Caddy Cushion

Cushion	W x D x H (mm)	Code	Group 1	Group 2	Group 3	Group 4	Group 5+
Pedestal	400 x 600 x 30	AVMPCU60G					
Caddy	400 x 400 x 30	AVMCCU80G					

Full details see pages 208-210. For fabric options see page 254-259.



**QS:** Quick Ship | **GROUP A:** Subject to a longer lead time.

- Available
- Not Available



## CABLE MANAGEMENT

Libra is available with optional cable management, solid metal or wire mesh.

### METAL CABLE TRAYS



Description	Colour	Code	QS	Grp A
Libra 1200 cable tray	Black	LBCTRAY12	●	●
Libra 1400 cable tray	Black	LBCTRAY14	●	●
Libra 1600 cable tray	Black	LBCTRAY16	●	●

### WIRE MESH CABLE TRAYS



Description	Colour	Code	QS	Grp A
Wire mesh cable tray for 1200mm desk	Chrome	ACMESH12	●	●
Wire mesh cable tray for 1400mm desk	Chrome	ACMESH14	●	●
Wire mesh cable tray for 1600mm desk	Chrome	ACMESH16	●	●



# A COMMITMENT TO SERVICE

## Dedicated Customer Service

The values of Integrity, Commitment, Development, Accountability and Teamwork underpin the culture and aspirations of the Company. We strive to design and develop an extensive portfolio of quality products which combine aesthetics and practicality to offer Best Value solutions. The ongoing monitoring of every aspect of the business ensures we are able to implement continuous improvements to maintain our determined commitment to customer service.



## Inhouse Delivery Fleet

We operate and manage our own delivery fleet and are targeted for accurate, on time order fulfillment. Rapid turnaround is guaranteed by our weekly scheduled deliveries and, on many items, we also offer a 'Quick Ship' service. Standard deliveries are free of charge with next day delivery on stocked items or customer collection (with 24 hours' notice) also available.

- Quick Ship: Products delivered within 5 working days from your order deadline date.
- Group A: Products subject to a longer lead time (typically 3 weeks).



## Extensive Stock Holding

Our 200,000 square feet manufacturing base includes an extensive warehousing facility. We hold stock of an estimated 50,000 items including raw materials and finished goods.

This substantial financial investment provides a further demonstration of our determined commitment to the highest levels of customer service.

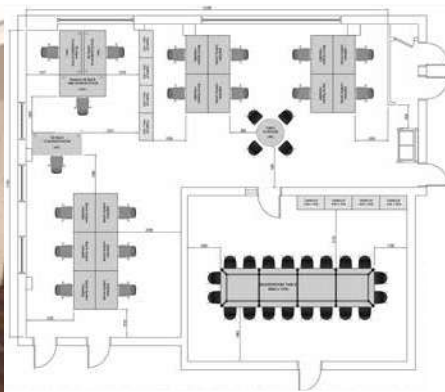


# INHOUSE EXPERTISE

## Bespoke Design

Unlike many manufacturers, we are able to develop customised solutions to match each client's precise requirements. With its own production unit and dedicated team, our Bespoke department can design and manufacture products from original 'sketches' or develop existing range items to customised specifications.

Your dedicated account manager, together with a member of the Bespoke team, will work with you to develop a solution to match your requirement and budget.



## Planning & Design

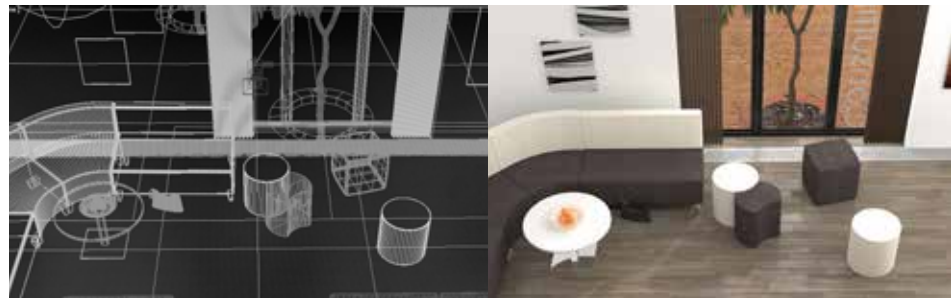
Our highly experienced designers are available to offer expert space planning and design services. Working from simple sketches or architect plans, we can recommend product choice, configurations and finishes to match desired outcomes and available budget.

We are able to advise regarding effective space utilisation and also work collaboratively to consider lighting, team requirements, storage as well as existing building services and future reconfigurations of any environments.

## CGI Expertise

We have an extensive library of product images together with a portfolio of 3D CAD files. Customers can download files from our web site or upon request.

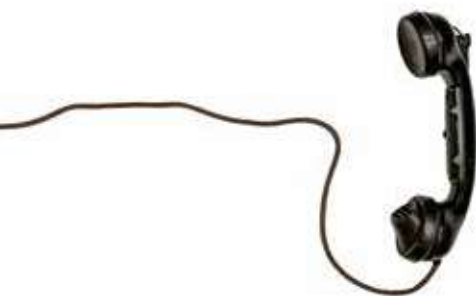
The wide choice of CGI, photo-realistic room scenes can help visualise proposed interiors, colours, and designs.



## Sales & Customer Support

We know relationships are important. Our nationwide sales team offers 'face to face' meetings to provide expert support, advice and guidance as well as facilitating access to our extensive inhouse services including customised marketing materials, product samples and collaborative events.

Each and every order is carefully monitored and tracked by our customer services team. Fully trained advisors provide a dedicated point of contact to manage queries and requests as well as full after-sales support.





# A COMMITMENT TO QUALITY

Continuous investment in facilities and training, coupled with a dedicated workforce and strong supplier relationships, ensures the quality, consistency and reliability our customers expect. The management and measurement of our internal processes and procedures drives our quest for development and improvement and, therefore, ongoing customer satisfaction.

We have an established reputation for the supply of robust, quality products. We design and manufacture to comply with relevant British and international standards – covering dimensions; ergonomics; strength & stability; moving parts; fire regulations; and electrical systems. The inherent strength and durability means that our products will withstand the rigours of daily ‘wear and tear’ thus extending the lifecycle. Our furniture includes a 7-year guarantee (unless specified).

Copies of our credentials and certifications are available at [leeandplumpton.co.uk](http://leeandplumpton.co.uk)



Quality Management System BS EN ISO 9001



Environmental Management System BS EN ISO 14001



Occupational Health And Safety Management System OHSAS 45001 (OH&S)



Commercial Interiors U.K. (CIUK)



Established 1987

Commercial Furniture Advisory Service (CFAS)



Members Of Furniture Industry Research Association (FIRA)



# RESPONSIBLE MANUFACTURING

As a major manufacturer, we recognise our responsibility to consider all areas of our business in terms of environmental impact. From management, administration and product design through to facilities management and logistics together with manufacturing processes and procedures, we strive to introduce positive changes to protect the planet.

Our efforts embrace the full spectrum of business activities including reductions in carbon emissions through to waste prevention, recycling initiatives, transportation, investment in solar power and procurement practices. Sustainability and circularity principles are embedded within our product design and development processes. We are committed to minimising our carbon impact and working towards a greener future.

## Environmental Management

We measure and assess our efforts through our integrated Environmental Management System. Registered to ISO 14001: 2015, our system incorporates clear objectives which are monitored and measured through a documented programme with regular reviews for continuous improvement.



## Chain of Custody

Our Chain of Custody certification (COC) with the Forest Stewardship Council® (FSC®) represents the unbroken path that certificated products take, from the sustainably managed forests of origin, to the consumer.



The mark of responsible forestry

## Sustainability

Created in 2006, the Furniture Industry Sustainability Programme (FISP) has become established as the furniture industry forum on all environmental and sustainability issues. These considerations relate to all aspects of the industry's business, from purchasing and procurement through to end of product life, including social, ethical and employment concerns as well as waste, energy and emissions.

We have achieved full membership of FISP and this enables us to focus on reducing our social and environmental impact. We have been proud members of the Furniture Industry Sustainability Programme (FISP) since 2007. Membership is subject to regular independent re-audits to monitor our continuing commitment.



## Energy Management

Our energy management strategy includes a number of practices to minimise usage throughout all areas of the business. In addition, in the last year our solar panels have generated over 160,000 Kwh of electricity. Nearly half of the output is returned to the National Grid – sufficient to power 26 three/quarter bedroom homes for a year.



## LEE & PLUMPTON

Bunns Bank | Attleborough Norfolk | NR17 1QD  
T: 01953 453830 | E: sales@leeandplumpton.co.uk

[leeandplumpton.co.uk](http://leeandplumpton.co.uk)



@LEEANDPLUMPTON

October 2022\_v1.1

E&OE October 2022

Images featured within this brochure are for illustrative purposes and appearances may vary from those shown. Due to our ongoing initiatives, Lee & Plumpton Ltd. reserve the right to change, modify or delete products at any time without notification.

